

CALIPRI®  
WHEEL

# RAIL, GROOVED RAIL AND SWITCH GEOMETRY



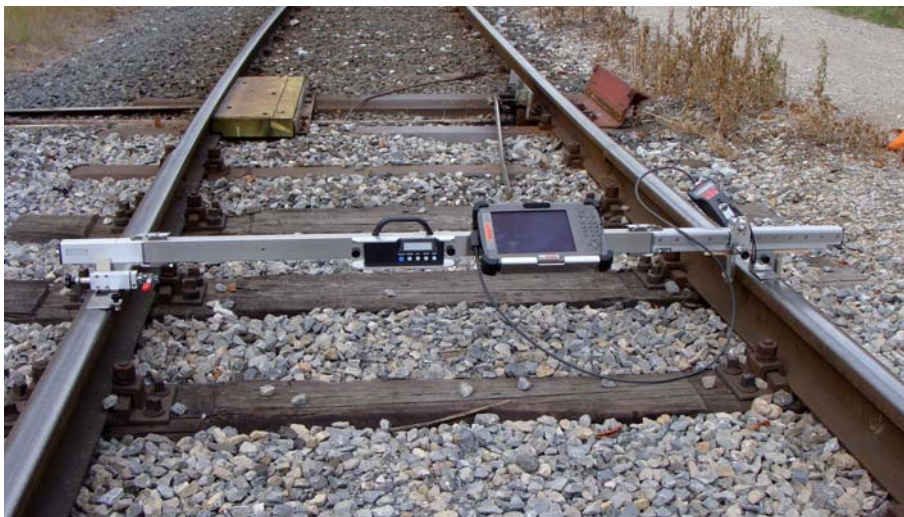
## RAIL, GROOVED RAIL AND SWITCH GEOMETRY

With the “Rail geometry,” “Grooved rail geometry” and “Switch geometry” modules, it is possible to record the profile shapes of both sides in a common coordinate system. To this purpose, the sensor is mounted on a mechanical device that allows the sensor to allocate the data precisely to the opposite side as well as the upper edge of the rail. In

addition, it guarantees the measurement of an exactly defined cross section even with conic objects like blades and switch frogs.



Thus the modules provide essential raw data that are required for the analysis of the driving behavior and the calculation of the equivalent conicity.



### TECHNICAL DATA

**Measurement parameters:**

- As with rail, grooved rail and switch modules
- Profile shapes in a common coordinate system
- Track gauge deviation
- Cant

Other dimensions on request

**System requirements:**

CW40 – Calipri-Wheel

**Accuracy:** < +/- 80 µm

**Repeatability:** < +/- 35 µm

**Measurement duration:**

approx. 5 sec.

**Measurement ranges:**

For all common rail, grooved rail and switch profiles

**Scope of delivery:**

- Software module – pre-installed at delivery on CW40 – Calipri Wheel
- Geometry gauge

**Order:**

CWM016 – Rail geometry

CWM017 – Grooved rail geometry

CWM018 – Switch geometry

**nextSENSE**

NextSense Mess- & Prüfsysteme GmbH  
Reininghausstraße 13a, 8020 Graz, Austria  
Tel. +43.316.232 400-0, Fax +43.316.232 400-599  
Mail office@nextsense.at, www.nextsense.at