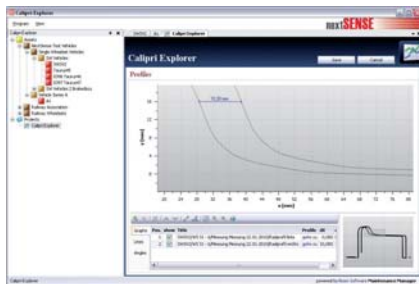


CALIPRI-EXPLORER

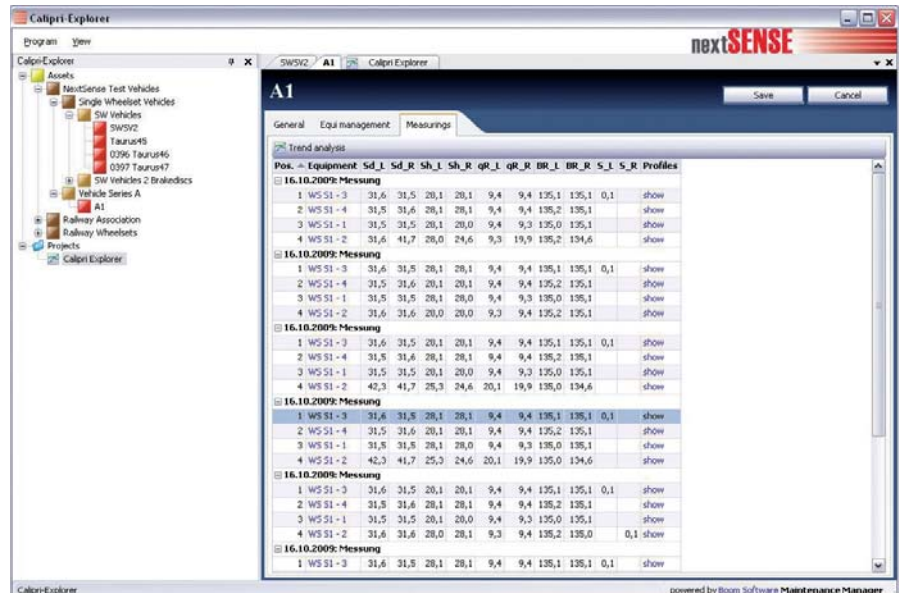
Calipri Explorer is a special software solution for the entry, storage and analysis of measurement data.

Calipri Explorer visualizes and documents all measurements, wear limit inflections (tolerances) and the historical records per vehicle, wheel set, wheel and so on.



Calipri Explorer uses a well-arranged tree structure for the structured administration and documentation of vehicles and the wheel sets that belong to them. Thus the measurements are always mapped in a structure that corresponds to the actual situation.

Calipri Explorer provides a selection of analytical functions that, among other



things, enable the comparison of several wheel set profiles with one another or with a target profile; or lend support to distance measurements and angular measurements of profiles. The visualization of historical measurement records

reveals the expected remaining useful life of wheel sets, facilitating a more precise planning and optimization of maintenance intervals.

KEY FEATURES

Key-Features:

- Traceability for years to come
- Comprehensive functions for analysis and comparison
- Display of target profiles
- Mapping of historical trend graphs, including tolerance tables
- Quick start of operation by pre-configured systems indices and tolerance tables (templates)
- Easy operation
- Expandable by dint of modules at any time

Licensing:

- Single-user license, non-recurring
- Multi-user license available on request

Available languages:

- German, English
- More languages available on request

System requirements (standard PC):

- Operating system, starting with Windows XP
- Intel processor, 2 GHz and upward
- Random access memory (RAM), minimum 1GB
- Hard disk capacity, minimum 30GB
- Network interface card (NIC)

nextSENSE

NextSense Mess- & Prüfsysteme GmbH
Reininghausstraße 13a, 8020 Graz, Austria
Tel. +43.316.232 400-0, Fax +43.316.232 400-599
Mail office@nextsense.at, www.nextsense.at